



Refrigerators and freezers
Horeca
2016/2017

LIEBHERR
Quality, Design and Innovation

Refrigerators and freezers for hotel and catering

Exacting standards are demanded of refrigerators and freezers in the restaurant, hotel and catering business. With a Liebherr appliance, you opt for reliable operation, innovative premium quality – and for top design. Liebherr offers all the advantages that matter in professional applications: high-quality components and maximum net capacity, efficient refrigerating capacity, reliable temperature consistency and very easy cleaning. Most of all, Liebherr appliances stand out due to their low power consumption and maximum efficiency. The appliances are designed for integration in a HACCP concept and comply with the requirements for optimum food hygiene. You can rely on Liebherr professional models – 24 hours a day, 365 days a year.





Contents

Refrigerators and freezers GN 2/1
with fan-assisted cooling and stainless steel inner liner _____ 08

Refrigerators and freezers GN 2/1
with fan-assisted cooling and polystyrol inner liner _____ 16

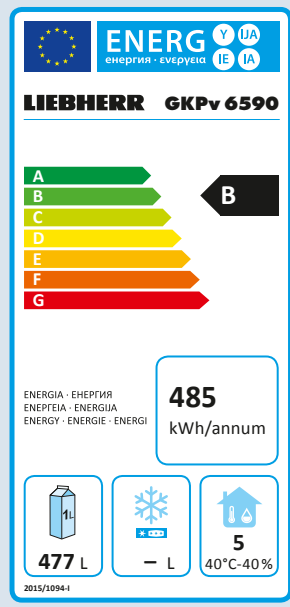
Freezers with static cooling _____ 26

Fridge-freezer _____ 28

Table-height refrigerators and freezers _____ 30

Accessories _____ 36

New: EU regulation on the labelling of commercial refrigerators and freezers



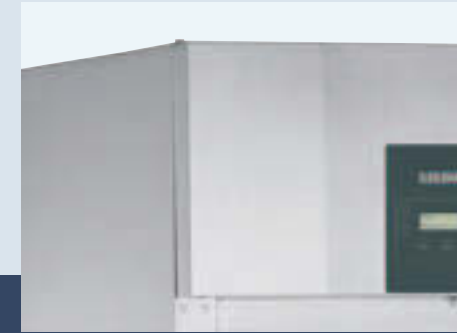
In order to reduce the energy consumption in the European Union and to support the sale of energy-efficient appliances, the European Commission has issued the regulation 2015/1094 “Energy labelling of professional refrigerators and freezers” effective from 1 July 2016. After this date certain appliances that are designed for the storage of food in a commercial environment will have to be labelled with an energy label.

The label shows the energy classification between classes A and G, the energy consumption in kWh/year, the net capacity in litres as well as the climate class, for which the appliance is designed. Excepted from the labelling obligation are static appliances, fridge-freezers, chest freezers as well as appliances used for sales promotion.

- Climate class definitions**
- Climate class 3: Ambient temperatures from +10°C to +25°C
 - Climate class 4: Ambient temperatures from +10°C to +30°C
 - Climate class 5: Ambient temperatures from +10°C to +40°C
 - Climate class 7: Ambient temperatures from +10°C to +35°C

The climate class indicated on the energy label represents the maximum ambient temperature at the appliance’s installation site. At this temperature the internal temperatures required for the safe storage of food are maintained.

Good reasons to choose Liebherr



Highest performance

Liebherr catering and hotel refrigerators and freezers provide optimum refrigerating capacity even in extreme climate conditions. The use of ultra-modern components, efficient and environmentally friendly refrigerants as well as precision controls ensure that product quality and freshness is preserved – and the appliances are always efficient.

Low operating costs

Thanks to the precision electronic controller in conjunction with the optimised refrigeration system, Liebherr appliances are highly efficient – with very low energy consumption. This is also promoted by highly effective insulation resulting in outstanding eco-friendliness and low power and operating costs. The high quality guarantees long life and reliable operation of the appliances. You can count on Liebherr – in every way!

Sturdy quality

Liebherr appliances are specially constructed for intensive professional use and feature a very sturdy design – with highest-quality materials and perfect workmanship right down to the smallest detail. The quality of the appliances is ensured by elaborate tests. All electronic and refrigeration components are well balanced to ensure maximum functionality and efficiency – including an attractive design.

Easy cleaning

Hygiene plays a decisive role in the hotel, restaurant and catering business. That is why Liebherr appliances are equipped with moulded inner liners with large radii that are easy to clean with no hidden dirt-traps. Adjustable wire shelves enable individual adaptation to different packaging types or products. Depending on the model, castors or adjustable legs also allow easy cleaning of the floor underneath the appliances.

Design and appearance

Highly efficient technology at its best: during the design process Liebherr attaches great importance to the elegant and high-quality appearance of its appliances. Specially processed materials and perfectly designed structures are the hallmark of the unique Liebherr style. Thanks to their consistent design, Liebherr appliances can be combined perfectly and are always attractive as well.

Easy servicing

Liebherr appliances are designed for easy servicing – with a sophisticated concept and high-quality, durable materials. This ensures that our refrigerators and freezers are virtually maintenance-free and very easy to operate: ideal for professional use.

The advantages at a glance



Hinged detachable unit cover panel provides easy access during servicing or **cleaning**. The one-piece unit cover combined with the membrane control panel is designed with effective and time-saving cleaning in mind.

Integrated pressure relief valve for easy opening of the door.

Demand-responsive hot gas defrost system reduces defrost time to approx. 10 minutes and lowers the energy input.

To **increase** the **net capacity** of the inner liner, functional parts like fans and evaporators are located outside the refrigerator compartment to save space.

Two highly efficient fans reduce the energy consumption and ensure optimum cold air distribution via the Liebherr air ducting system.



The **stainless steel outer housing** made of one-piece side walls with 83 mm insulation is gap-free and, as a result, is very hygienic and easy to clean.



The **moulded liner base** features generously radiused corners for easy cleaning and a water drain for optimum hygiene.



Foot pedal for easy opening of the door if you don't have a hand free.



Precision electronic control systems and the high-quality refrigeration components ensure **maximum energy efficiency**. Visual and audible door alarms alert the user to any excessive rise in temperature and loss of cold air.



In conjunction with highly efficient compressors, the **environmentally friendly refrigerant R 290** is highly effective and energy-efficient.

Serial bus interface, volt-free contact and infrared interface enable networking with central monitoring and alarm systems.

The **moulded Gastronorm 2/1 inner liner** in stainless steel combines a number of advantages but is above all easy to clean with no hidden dirt-traps. Also repositioning shelves or GN containers is now quick and easy.



The **door hinges** are **reversible** without any additional components and allow the appliance to be adapted to the installation site.

The **self-closing door** with an easily exchangeable magnetic seal closes reliably and tightly and prevents unnecessary loss of cold air. The ergonomic, full-length integrated handle ensures particularly convenient opening of the door. All the surfaces with regular hand contact are fully visible and extremely easy to wipe clean.

Height-adjustable feet as standard allow for easy cleaning also underneath the appliance.

GKPV 6590

Top performance for foodservice professionals

The two top ProfiPremiumLine and ProfiLine ranges offer everything demanding commercial users expect from modern refrigerators and freezers: highly efficient refrigeration components ensure rapid cooling of food with low energy consumption. The HACCP-

compliant electronic control system allows accurate temperature setting. Adjustable shelves and the hygienic moulded liner ensure optimum variability and use of storage space.

Advantage of hot gas defrosting

For minimal temperature change during defrost

30 min
Electric defrosting

10 min
Hot gas defrosting

Energy-efficient hot-gas defrost system.

Defrost less often and faster: the appliances defrost only when required since the controller calculates the defrost cycles based on the compressor run-time. Energy-efficient hot gas reduces the defrost time from approx. 30 to only approx. 10 minutes – with a low rise in temperature in the appliance. Positive for food quality: food items are not exposed to unnecessary temperature fluctuations.



Tough moulded inner liner.

The moulded stainless steel inner liner has integrated ribs as shelf support surfaces. In addition it is corrosion-resistant, hygienic and particularly easy to clean. The shelves have a loading capacity of up to 60 kg – so overloading is almost impossible. Gastronorm containers 2/1 slide directly on the storage ribs. The moulded liner base features generously radiused corners as well as a very practical cleaning drain.



Effective insulation.

The appliances have 83 mm insulation in the walls and 60 mm insulation in the door. This supports temperature consistency and ensures constantly low energy consumption. The door and gasket form a very tight-closing design, which prevents the loss of cold air from the interior and eliminates condensation around on the gasket and door frame.

Easily accessible refrigeration components.

The refrigeration components are integrated in the upper area of the unit, which allows easy access and distinctly increases the net capacity of the interior. The unit cover is simply opened upwards for convenient cleaning or for service operations as required. From an opening angle of 45° it can be unhinged completely.

Operating conditions – high climate rating.

Sometimes in the kitchen not only temperaments but also temperatures get very hot. That is why the professional Liebherr appliances are designed for climate rating 5 with high ambient temperatures up to +40°C (Except models GKPv 6573 and GGPv 6590). They always operate properly and efficiently even in extreme conditions.



ProfiPremiumLine electronic control system with integrated temperature logging.

The easy to use electronic control system is equipped with default temperature range and humidity control programs. In addition it controls the energy-saving defrost function as required. Appliances can be connected via the RS 485 interface to external temperature logging software. The integrated data logger records and stores the interior temperature for HACCP-compliant documentation at regular intervals. In case of temperature deviations, caused e.g. by a door that is open a long time, the electronic control system triggers a visual and audible door alarm, thus protecting your products. The sturdy membrane keyboard is dirt resistant and easy to clean.



Air ducting system for excellent temperature distribution.

The innovative air ducting system is designed to maintain freshness during food storage: two fans draw the air over the cooling evaporator, then it is directed downwards behind an air deflector. This ensures constant air circulation – and uniform temperature distribution.



Self-closing door.

For convenient loading or product removal, the doors have a 90° dwell position. At less than 60° the doors close automatically – and reliably. To keep your hands free during filling, ProfiPremiumLine appliances can be opened by means of a foot pedal (optionally available also for ProfiLine). The door seals can be replaced without any tools and the door hinges can easily be reversed.

Pressure relief valve.

Inside refrigerators and freezers a vacuum is built up by air exchange which causes resistance when the door is reopened. The integrated pressure relief valve compensates this vacuum automatically and immediately – the doors remain easy to open.

Environmentally friendly refrigerant.

Only the ecologically safe refrigerant R 290 is used. In conjunction with highly efficient refrigeration components, Liebherr appliances achieve the highest possible degree of environmental friendliness and energy saving.



Refrigerators GN 2/1 with fan-assisted cooling	GKPx 6590 ProfiPremiumLine	GKPx 1490 ProfiPremiumLine	GKPx 1470 ProfiLine	GKPx 6570 ProfiLine	GKPx 6573 ProfiLine
					LED
Total gross/net capacity	601 / 477 litre	1427 / 1079 litre	1427 / 1079 litre	601 / 477 litre	601 / 477 litre
Exterior dimensions in mm (w/d/h)	700/830/2150	1430/830/2150	1430/830/2150	700/830/2150	700/830/2150
Interior dimensions in mm (w/d/h)	510/650/1550	1240/650/1550	1240/650/1550	510/650/1550	510/650/1550
Energy efficiency class ¹		<D>	<D>	<C>	<D>
Energy consumption in 365 days ²	485 kWh	1333 kWh	1775 kWh	659 kWh	929 kWh
Climate rating	5	5	5	5	4
Refrigerant	R 290	R 290	R 290	R 290	R 290
Sound power level	58 dB(A)	58 dB(A)	58 dB(A)	58 dB(A)	58 dB(A)
Connection rating	2.0 A/250 W	2.5 A/350 W	2.5 A/350 W	2.0 A/250 W	2.0 A/250 W
Frequency/voltage	50 Hz/220–240V~	50 Hz/220–240V~	50 Hz/220–240V~	50 Hz/220–240V~	50 Hz/220–240V~
Cooling system / Defrost	forced-air / automatic	forced-air / automatic	forced-air / automatic	forced-air / automatic	forced-air / automatic
Temperature range	-2°C to +16°C	-2°C to +16°C	+1°C to +15°C	+1°C to +15°C	+1°C to +15°C
Gastronorm	530 x 650 mm	530 x 650 mm	530 x 650 mm	530 x 650 mm	530 x 650 mm
External cabinet finish	stainless steel	stainless steel	stainless steel	stainless steel	stainless steel
Door / lid material	stainless steel	stainless steel	stainless steel	stainless steel	Glass door with stainless steel frame
Internal liner material	304-grade stainless steel	304-grade stainless steel	304-grade stainless steel	304-grade stainless steel	304-grade stainless steel
Type of control	electronic controller with text display	electronic controller with text display	electronic controller	electronic controller	electronic controller
Temperature display	external digital	external digital	external digital	external digital	external digital
Interior light					LED lighting, with separate switch
Fault: warning signal	visual and audible	visual and audible	visual and audible	visual and audible	visual and audible
Interface / Volt-free alarm contact	RS 485/yes	RS 485/yes	–/yes	–/yes	–/yes
Adjustable shelves / Shelf material	4 / 304-grade stainless steel wire shelves	8 / 304-grade stainless steel wire shelves	8 / wire shelves plastic-coated	4 / wire shelves plastic-coated	4 / wire shelves plastic-coated
Shelf loading	60 kg	60 kg	60 kg	60 kg	60 kg
Height of adjustable legs	120–170 mm	120–170 mm	120–170 mm	120–170 mm	120–170 mm
Handle	full-length integrated handle	full-length integrated handle	full-length integrated handle	full-length integrated handle	full-length integrated handle
Foot pedal opener	yes	yes			
Lock	fitted	fitted	fitted	fitted	fitted
Self-closing door / Door hinges	yes / right, reversible on site	yes / –	yes / –	yes / right, reversible on site	yes / right, reversible on site
Insulation	83–60 mm	83–60 mm	83–60 mm	83–60 mm	83–60 mm
Gross/net weight	135/119 kg	220/197 kg	224/201 kg	133/117 kg	144/127 kg
Also available with castors	yes	yes	yes	yes	yes
Remote condensing unit option R 134a			GKPx 1470, version 525	GKPx 6570, version 525	
Accessories					
Stainless steel wire shelf	7112904	7112904	7112904	7112904	7112904
Shelf, plastic-coated	7112908	7112908	7112908	7112908	7112908
U-shaped trayslide, right/left		9001761 / 9001757	9001761 / 9001757		
Optional castor set	9590581	9590583	9590583	9590581	9590581
Infrared key incl. software	9590389	9590389			
RS 485/RS 232 adapter, data log software	9590387	9590387			
NTC product temperature probe	9590407	9590407			
Foot pedal opener	9590659	9590639	9590639	9590659	9590659



Freezers GN 2/1 with fan-assisted cooling	GGPv 6590 ProfiPremiumLine	GGPv 1490 ProfiPremiumLine	GGPv 1470 ProfiLine	GGPv 6570 ProfiLine
	No Frost	No Frost	No Frost	No Frost
Total gross/net capacity	601 / 477 litre	1427 / 1079 litre	1427 / 1079 litre	601 / 477 litre
Exterior dimensions in mm (w/d/h)	700/830/2150	1430/830/2150	1430/830/2150	700/830/2150
Interior dimensions in mm (w/d/h)	510/650/1550	1240/650/1550	1240/650/1550	510/650/1550
Energy efficiency class ¹		<D>	<D>	<D>
Energy consumption in 365 days	1165 kWh	4559 kWh	4881 kWh	2529 kWh
Climate rating	4	5	5	5
Refrigerant	R 600a	R 290	R 290	R 290
Sound power level	60 dB(A)	60 dB(A)	60 dB(A)	60 dB(A)
Connection rating	3.5 A/500 W	5.0 A/700 W	4.5 A/700 W	4.0 A/600 W
Frequency/voltage	50 Hz/220–240V~	50 Hz/220–240V~	50 Hz/220–240V~	50 Hz/220–240V~
Cooling system/Defrost	forced-air/automatic	forced-air/automatic	forced-air/automatic	forced-air/automatic
Temperature range	-10°C to -35°C	-10°C to -26°C	-10°C to -26°C	-10°C to -35°C
Gastronorm	530 x 650 mm	530 x 650 mm	530 x 650 mm	530 x 650 mm
External cabinet finish	stainless steel	stainless steel	stainless steel	stainless steel
Door/lid material	stainless steel	stainless steel	stainless steel	stainless steel
Internal liner material	304-grade stainless steel	304-grade stainless steel	304-grade stainless steel	304-grade stainless steel
Type of control	electronic controller with text display	electronic controller with text display	electronic controller	electronic controller
Temperature display	external digital	external digital	external digital	external digital
Fault: warning signal	visual and audible	visual and audible	visual and audible	visual and audible
Interface/Volt-free alarm contact	RS 485/yes	RS 485/yes	–/yes	–/yes
Adjustable shelves	4	8	8	4
Shelf material	304-grade stainless steel wire shelves	304-grade stainless steel wire shelves	wire shelves plastic-coated	wire shelves plastic-coated
Shelf loading	60 kg	60 kg	60 kg	60 kg
Height of adjustable legs	120–170 mm	120–170 mm	120–170 mm	120–170 mm
Handle	full-length integrated handle	full-length integrated handle	full-length integrated handle	full-length integrated handle
Foot pedal opener	yes	yes		
Lock	fitted	fitted	fitted	fitted
Self-closing door	yes	yes	yes	yes
Door hinges	right, reversible on site			right, reversible on site
Insulation	83–60 mm	83–60 mm	83–60 mm	83–60 mm
Gross/net weight	147/130 kg	229/205 kg	229/205 kg	146/130 kg
Also available with castors	yes	yes	yes	yes
Accessories				
Stainless steel wire shelf	7112904	7112904	7112904	7112904
Shelf, plastic-coated	7112908	7112908	7112908	7112908
U-shaped trayslide, right/left		9001761/9001757	9001761/9001757	
Optional castor set	9590581	9590583	9590583	9590581
Infrared key incl. software	9590389	9590389		
RS 485/RS 232 adapter, data log software	9590387	9590387		
NTC product temperature probe	9590407	9590407		
Foot pedal opener	9590659	9590639	9590639	9590659

The advantages at a glance



Precision and easy-to-use control system featuring a hygienic membrane panel and high-quality refrigeration components for maximum energy efficiency. Visual and audible door alarms alert the user to any excessive rise in temperature and loss of cold air.

The **natural** and CFC free **refrigerants R 290** and **R 600a** are environmentally-friendly and, in conjunction with highly efficient compressors, are very energy-efficient.



Demand-based technology: highly efficient fan-assisted cooling system for stable and evenly distributed interior temperatures. The door operated fan cut-out switch minimises the loss of cold air when the door is opened. Thanks to the rear-wall condenser, the system is virtually maintenance-free.



The **moulded inner liner** made of food-safe commercial-grade polystyrol is odourless, very tough, durable and easy to clean for perfect hygiene thanks to the generously radiused corners.



The **plastic-coated wire shelves** allow variable use of the interior and have a loading capacity of up to 60 kg, ensuring safe product storage even in extreme conditions.



The appliances are delivered with **assembled stainless steel adjustable legs**, which saves time and effort on site. The height of the feet can be adjusted individually to enable convenient cleaning also underneath the appliance. Castors are also optionally available.



The **reversible door hinges** allow the appliances to be adapted to an installation site. All the necessary parts are included in the delivery; the door can quickly be reversed on site.



The **sturdy slimline door handle** is designed for intensive use, ergonomic, very easy to grasp and easy to clean.



The drain in the **liner base** enhances and simplifies cleaning the cabinet interior.



Self-closing door with removable magnetic gasket. For convenient use, the doors remain open at 90° to allow easy loading or removal of larger quantities. At less than 60° the doors close automatically and reliably. That prevents the loss of cold air and helps to increase energy efficiency.

Freezing

Hot gas defrosting in GGv. The highly efficient system defrosts the appliance in approx. 10 minutes, minimising the temperature rise in the interior during defrosting and saving energy.

30 min Electric defrosting	10 min Hot gas defrosting
-------------------------------	------------------------------

Quality right down to the smallest detail

These models offer the perfect solution for many applications in the restaurant business. They combine a very large net capacity with the well-known Liebherr qualities: hygienic, sturdy and durable, reliable with optimum refrigerating capacity and many innovative equipment details. The temperature can be set accurately from +1°C up to +15°C, in the GKv 5790 and GKv 5730

models also from -2°C up to +15°C. Where space is limited, these models are the ideal solution – thanks to their compact design, maximum net capacity is available on a small footprint.

Advantage of hot gas defrosting

For minimal temperature change during defrost

30 min

Electric defrosting

10 min

Hot gas defrosting

Energy-efficient hot-gas defrost system in GGv models.

Defrost less often and faster: the appliance defrosts only when required since the controller calculates the defrost cycles based on the compressor run-time. Energy-efficient hot gas reduces the defrost time from approx. 30 to only approx. 10 minutes – with a low rise in temperature in the appliance. Positive for food quality: food items are not exposed to unnecessary temperature fluctuations.

Freezer baskets.

Static freezer models GG 52 / GG 40 are fitted with baskets as standard. These can be used to organise the freezer contents and they also enhance handling frozen products and allow flexible organisation of the interior.

Large usable net capacity.

Thanks to their special structural design, these refrigerators and freezers have very large net volumes and offer numerous storage options on a small footprint.

Low-maintenance and environmentally friendly.

The GKv, GGv and GG models are equipped with an efficient and readily accessible rear panel condenser, which makes filter replacement or cleaning unnecessary. The good energy efficiency of the appliances is increased by the use of the environmentally friendly refrigerants R 290 und R 600a, which have a low global warming potential and are future-proof.



Easy to use, high precision controller.

The refrigerators and freezers are equipped with a precise and easy to use controller with a digital display. Temperatures can be set exactly to the degree wanted. The unique, one-piece membrane keyboard is extremely easy to clean. In case of temperature deviations, caused e.g. by a door that is open a long time, the controller triggers a visual and audible door alarm, thus protecting the stored products. In the refrigerators, the storage humidity can be adapted to different requirements with the fan mode selection function. The extended temperature range from -2°C to +15°C in the GKv 5730 and GKv 5790 models is ideal for products which must be stored at approximately 0°C or below.



Pre-installed stainless steel legs.

On models supplied with adjustable legs these are already installed at the factory. These provide enough clearance from the floor to allow easy cleaning underneath the appliance. Castors are optionally available.



Low-maintenance, resilient, practical.

The inner liner is seamlessly moulded with large radii, easy to clean and hygienic. Liebherr uses polystyrene in commercial quality for this – a food-safe, extremely sturdy and durable material. The reinforced grid shelves have a high loading capacity of up to 45 kg or 60 kg. Practical in the GKv 57 and 64 appliances: two GN 1/1 containers can be placed next to one another instead of behind one another.



Refrigerators GN 2/1 with fan-assisted cooling	GKv 6460	GKv 6410	GKv 5760	GKv 5710	-2 °C refrigerators GN 2/1 with fan-assisted cooling	GKv 5790	GKv 5730
Total gross /net capacity	663 /499 litre	663 /499 litre	583 /437 litre	583 /437 litre	Total gross /net capacity	583 /437 litre	583 /437 litre
Exterior dimensions in mm (w/d/h)	750 /750 /2064	750 /750 /2064	750 /750 /1864	750 /750 /1864	Exterior dimensions in mm (w/d/h)	750 /750 /1864	750 /750 /1864
Interior dimensions in mm (w/d/h)	650 /581 /1710	650 /581 /1710	650 /581 /1510	650 /581 /1510	Interior dimensions in mm (w/d/h)	650 /581 /1510	650 /581 /1510
Energy efficiency class ¹	<D	<D	<D	<D	Energy efficiency class ¹	<D	<D
Energy consumption in 365 days	828 kWh	828 kWh	786 kWh	786 kWh	Energy consumption in 365 days	786 kWh	786 kWh
Climate rating	5	5	5	5	Climate rating	5	5
Refrigerant	R 600a	R 600a	R 600a	R 600a	Refrigerant	R 600a	R 600a
Sound power level	52 dB(A)	52 dB(A)	52 dB(A)	52 dB(A)	Sound power level	52 dB(A)	52 dB(A)
Connection rating	1.3 A /150 W	1.3 A /150 W	1.0 A /150 W	1.0 A /150 W	Connection rating	1.0 A /150 W	1.0 A /150 W
Frequency/voltage	50 Hz /220–240V~	50 Hz /220–240V~	50 Hz /220–240V~	50 Hz /220–240V~	Frequency/voltage	50 Hz /220–240V~	50 Hz /220–240V~
Cooling system	forced-air	forced-air	forced-air	forced-air	Cooling system	forced-air	forced-air
Defrost	automatic	automatic	automatic	automatic	Defrost	automatic	automatic
Temperature range	+1°C to +15°C	+1°C to +15°C	+1°C to +15°C	+1°C to +15°C	Temperature range	-2°C to +15°C	-2°C to +15°C
Gastronorm	650 x 530 mm	650 x 530 mm	650 x 530 mm	650 x 530 mm	Gastronorm	650 x 530 mm	650 x 530 mm
External cabinet finish	stainless steel	steel /white	stainless steel	steel /white	External cabinet finish	stainless steel	steel /white
Door /lid material	stainless steel	steel	stainless steel	steel	Door /lid material	stainless steel	steel
Internal liner material	commercial grade moulded polystyrol	commercial grade moulded polystyrol	commercial grade moulded polystyrol	commercial grade moulded polystyrol	Internal liner material	commercial grade moulded polystyrol	commercial grade moulded polystyrol
Type of control	electronic controller	electronic controller	electronic controller	electronic controller	Type of control	electronic controller	electronic controller
Temperature display	external digital	external digital	external digital	external digital	Temperature display	external digital	external digital
Fault: warning signal	visual and audible	visual and audible	visual and audible	visual and audible	Fault: warning signal	visual and audible	visual and audible
Adjustable shelves	6	6	5	5	Adjustable shelves	5	5
Shelf material	wire shelves plastic-coated	wire shelves plastic-coated	wire shelves plastic-coated	wire shelves plastic-coated	Shelf material	wire shelves plastic-coated	wire shelves plastic-coated
Shelf loading	60 kg	60 kg	60 kg	60 kg	Shelf loading	60 kg	60 kg
Height of adjustable legs	150–180 mm	150–180 mm	150–180 mm	150–180 mm	Height of adjustable legs	150–180 mm	150–180 mm
Handle	stainless steel slimline door handle	ergonomic slimline handle	stainless steel slimline door handle	ergonomic slimline handle	Handle	stainless steel slimline door handle	ergonomic slimline handle
Lock	fitted	fitted	fitted	fitted	Lock	fitted	fitted
Self-closing door	yes	yes	yes	yes	Self-closing door	yes	yes
Door hinges	right, reversible on site	right, reversible on site	right, reversible on site	right, reversible on site	Door hinges	right, reversible on site	right, reversible on site
Gross /net weight	105 /96 kg	106 /97 kg	95 /87 kg	96 /89 kg	Gross /net weight	97 /89 kg	98 /90 kg
Also available with castors	yes	yes	yes	yes	Also available with castors	yes	yes
Accessories					Accessories		
Shelf, plastic-coated	7113485	7113485	7113485	7113485	Shelf, plastic-coated	7113485	7113485
Stainless steel wire shelf	7112351	7112351	7112351	7112351	Stainless steel wire shelf	7112351	7112351
CNS base grid	7112349	7112349	7112349	7112349	CNS base grid	7112349	7112349
Optional castor set	9086457	9086457	9086457	9086457	Optional castor set	9086457	9086457
Foot pedal opener	7790683	7790683	7790683	7790683	Foot pedal opener	7790683	7790683

Refrigerators with fan-assisted cooling and polystyrol inner liner

[illegible]

NoFrost freezers with fan-assisted cooling and polystyrol inner liner



NoFrost freezers with fan-assisted cooling	GGv 5860	No Frost	GGv 5810	No Frost	GGv 5060	No Frost	GGv 5010	No Frost
Total gross/net capacity	547/388 litre		547/388 litre		478/337 litre		478/337 litre	
Exterior dimensions in mm (w/d/h)	750/750/2064		750/750/2064		750/750/1864		750/750/1864	
Interior dimensions in mm (w/d/h)	610/500/1395		610/500/1395		610/500/1225		610/500/1225	
Energy efficiency class ¹	<C		<C		<C		<C	
Energy consumption in 365 days	1351 kWh		1351 kWh		1245 kWh		1245 kWh	
Climate rating	5		5		5		5	
Refrigerant	R 290		R 290		R 290		R 290	
Sound power level	55 dB(A)		55 dB(A)		55 dB(A)		55 dB(A)	
Connection rating	3.0 A/ 400 W		3.0 A/ 400 W		3.0 A/ 400 W		3.0 A/ 400 W	
Frequency /voltage	50 Hz/220–240V~		50 Hz/220–240V~		50 Hz/220–240V~		50 Hz/220–240V~	
Cooling system	forced-air		forced-air		forced-air		forced-air	
Defrost	automatic		automatic		automatic		automatic	
Temperature range	-14°C to -28°C		-14°C to -28°C		-14°C to -28°C		-14°C to -28°C	
Euronorm	600 x 400 mm		600 x 400 mm		600 x 400 mm		600 x 400 mm	
Gastronorm	530 x 325 mm		530 x 325 mm		530 x 325 mm		530 x 325 mm	
External cabinet finish	stainless steel		steel /white		stainless steel		steel /white	
Door /lid material	stainless steel		steel		stainless steel		steel	
Internal liner material	commercial grade moulded polystyrol		commercial grade moulded polystyrol		commercial grade moulded polystyrol		commercial grade moulded polystyrol	
Type of control	electronic controller		electronic controller		electronic controller		electronic controller	
Temperature display	external digital		external digital		external digital		external digital	
Fault: warning signal	visual and audible		visual and audible		visual and audible		visual and audible	
Adjustable shelves	5		5		4		4	
Shelf material	wire shelves plastic-coated		wire shelves plastic-coated		wire shelves plastic-coated		wire shelves plastic-coated	
Shelf loading	60 kg		60 kg		60 kg		60 kg	
Handle	stainless steel slimline door handle		ergonomic slimline handle		stainless steel slimline door handle		ergonomic slimline handle	
Height of adjustable legs	150–180 mm		150–180 mm		150–180 mm		150–180 mm	
Lock	fitted		fitted		fitted		fitted	
Self-closing door	yes		yes		yes		yes	
Door hinges	right, reversible on site		right, reversible on site		right, reversible on site		right, reversible on site	
Insulation	70–70 mm		70–70 mm		70–70 mm		70–70 mm	
Gross/net weight	118/110 kg		119/110 kg		108/100 kg		109/101 kg	
Also available with castors	yes		yes		yes		yes	
Accessories								
Optional castor set	9086457		9086457		9086457		9086457	
Shelf, plastic-coated	7113475		7113475		7113475		7113475	
Foot pedal opener	7790683		7790683		7790683		7790683	

Freezers with static cooling 75 cm wide



Freezers with static cooling 75 cm wide	GG 5260	GG 5210	G 5216
Total gross /net capacity	513/472 litre	513/472 litre	513/472 litre
Exterior dimensions in mm (w/d/h)	750/750/1864	750/750/1864	750/750/1725
Interior dimensions in mm (w/d/h)	607/560/1510	607/560/1510	607/560/1510
Energy consumption in 365 days	419 kWh	419 kWh	384 kWh
Climate rating	7	7	7
Refrigerant	R 600a	R 600a	R 600a
Sound power level	45 dB(A)	45 dB(A)	45 dB(A)
Connection rating	1.0 A/150 W	1.0 A/150 W	1.5 A/150 W
Frequency/voltage	50 Hz/220–240V~	50 Hz/220–240V~	50 Hz/220–240V~
Cooling system	static	static	static
Defrost	manual	manual	manual
Temperature range	-14°C to -28°C	-14°C to -28°C	-14°C to -28°C
External cabinet finish	stainless steel	steel / white	steel / white
Door /lid material	stainless steel	steel	steel
Internal liner material	commercial grade moulded polystyrol	commercial grade moulded polystyrol	commercial grade moulded polystyrol
Type of control	electronic controller	electronic controller	electronic controller
SuperFrost			quantity-controlled
Temperature display	external digital	external digital	external digital
Fault: warning signal	visual and audible	visual and audible	visual and audible
Drawers	0	0	14
Number of baskets	14	14	0
Shelves, freezer compartment	7	7	7
Shelf material	evaporator plates	evaporator plates	evaporator plates
Shelf loading	60 kg	60 kg	60 kg
Compartment height in mm	6 x 187, 1 x 237	6 x 187, 1 x 237	6 x 187, 1 x 237
Height of adjustable legs	150–180 mm	150–180 mm	
Handle	stainless steel slimline door handle	ergonomic slimline handle	slimline handle with integrated opening mechanism
Lock	fitted	fitted	
Self-closing door	yes	yes	
Door hinges	right, reversible on site	right, reversible on site	right, reversible on site
Gross /net weight	116/108 kg	117/109 kg	110/104 kg
Also available with castors	yes	yes	
Accessories			
Optional castor set	9086457	9086457	
Drawer /short drawer	9792795/9792797	9792795/9792797	9792795/9792797
Basket /short basket	9141791/7112423	9141791/7112423	9141791/7112423
Foot pedal opener	7790683	7790683	

Freezers with static cooling 60 cm wide



Freezers with static cooling 60 cm wide	GG 4060	GG 4010
Total gross /net capacity	382/348 litre	382/348 litre
Exterior dimensions in mm (w/d/h)	600/680/1900	600/680/1900
Interior dimensions in mm (w/d/h)	457/480/1686	457/480/1686
Energy consumption in 365 days	443 kWh	443 kWh
Climate rating	7	7
Refrigerant	R 600a	R 600a
Sound power level	45 dB(A)	45 dB(A)
Connection rating	1.0 A/120 W	1.0 A/120 W
Frequency/voltage	50 Hz/220–240V~	50 Hz/220–240V~
Cooling system	static	static
Defrost	manual	manual
Temperature range	-14°C to -28°C	-14°C to -28°C
External cabinet finish	stainless steel	steel / white
Door /lid material	stainless steel	steel
Internal liner material	commercial grade moulded polystyrol	commercial grade moulded polystyrol
Type of control	electronic controller	electronic controller
Temperature display	external digital	external digital
Fault: warning signal	visual and audible	visual and audible
Drawers	0	0
Number of baskets	3	3
Shelves, freezer compartment	7	7
Shelf material	evaporator plates	evaporator plates
Shelf loading	60 kg	60 kg
Compartment height in mm	6 x 224, 1 x 240	6 x 224, 1 x 240
Handle	stainless steel slimline door handle	ergonomic slimline handle
Lock	fitted	fitted
Self-closing door	yes	yes
Door hinges	right, reversible on site	right, reversible on site
Gross /net weight	88/82 kg	90/84 kg
Accessories		
Adjustable legs	9086527	9086527
Basket	9141693	9141693
Roller bars	9086529	9086529

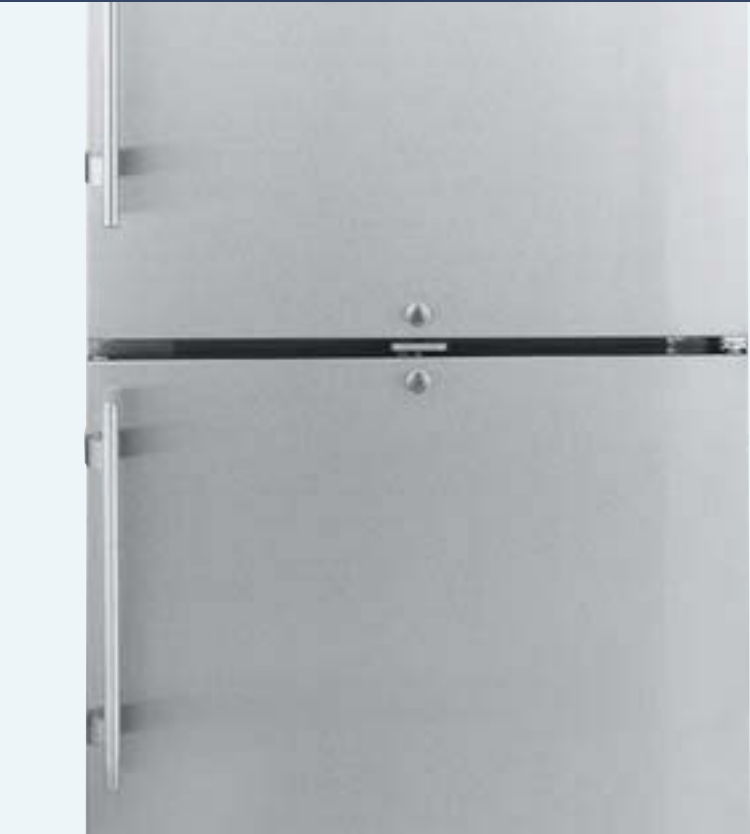
Quality right down to the smallest detail

The GCv fridge-freezer is specifically designed for commercial use in medium-duty applications. The two compressors and two separately controlled cooling circuits enable separate temperature setting from +1°C to +15°C in the fridge compartment and from -14°C to -28°C in the freezer compartment.



Double cooling power: two separate cooling circuits, two compressors.

Unlike many household fridge-freezers, the GCv model has two compressors and two separately controlled cooling circuits, thus enabling independant temperature setting from +1°C to +15°C in the fridge compartment and from -14°C to -28°C in the freezer compartment. As there is no air exchange between fridge and freezer compartments, the products are stored in optimum conditions without odour transfer between the two areas. On the whole this double concept offers far more refrigerating capacity – valuable when the door is opened frequently.



Fridge and freezer separately lockable.

In the GCv appliance the refrigerator and freezer can each be locked separately. The sturdy locks are designed for extreme conditions. The slimline door handle also features a very sturdy design.



Fridge-freezer

Total gross/net capacity	fridge compartment
Total gross/net capacity	freezer compartment
Exterior dimensions in mm (w/d/h)	
Interior dimensions in mm (w/d/h)	fridge compartment
Interior dimensions in mm (w/d/h)	freezer compartment
Energy consumption in 365 days	
Climate rating	
Refrigerant	
Sound power level	
Connection rating	
Frequency/voltage	
Cooling system	fridge/freezer comp.
Defrost	fridge/freezer comp.
Temperature range	fridge/freezer comp.
External cabinet finish	
Door/lid material	
Internal liner material	
Type of control	
Temperature display	
Fault: warning signal	
Adjustable shelves	
Shelf material	fridge/freezer comp.
Shelf loading	fridge/freezer comp.
Handle	
Lock	
Self-closing door	
Door hinges	
Insulation	
Gross/net weight	

Accessories

Shelf, plastic-coated

GCv 4060

254/240 litre
107/105 litre
600/615/2000
440/435/1105
431/435/597
475 kWh
5
R 600a
52 dB(A)
1.5 A/200 W
50 Hz/220–240V~
forced-air/static
automatic/manual
+1°C to +15°C / -14°C to -28°C
stainless steel
stainless steel
commercial grade moulded polystyrol
electronic controller
external digital
visual and audible
3
wire shelves plastic-coated/glass
45 kg/24 kg
stainless steel slimline door handle
fitted
yes
right, reversible on site
70–70 mm
88/82 kg

7112313

The advantages at a glance

01 Suitable for under-worktop installation. The 83 cm high FKUv and GGU models can easily be installed beneath a worktop and are a space-saving and ideal solution especially where space is limited.

02 In conjunction with the highly efficient compressor, the **environmentally friendly refrigerant R 600a** is highly effective and very energy-efficient.

03 Visual and audible door alarms alert the user to any excessive rise in temperature and loss of cold air.

Automatic defrosting. The modern and efficient controller ensures that the appliance defrosts automatically even in the busiest of locations.



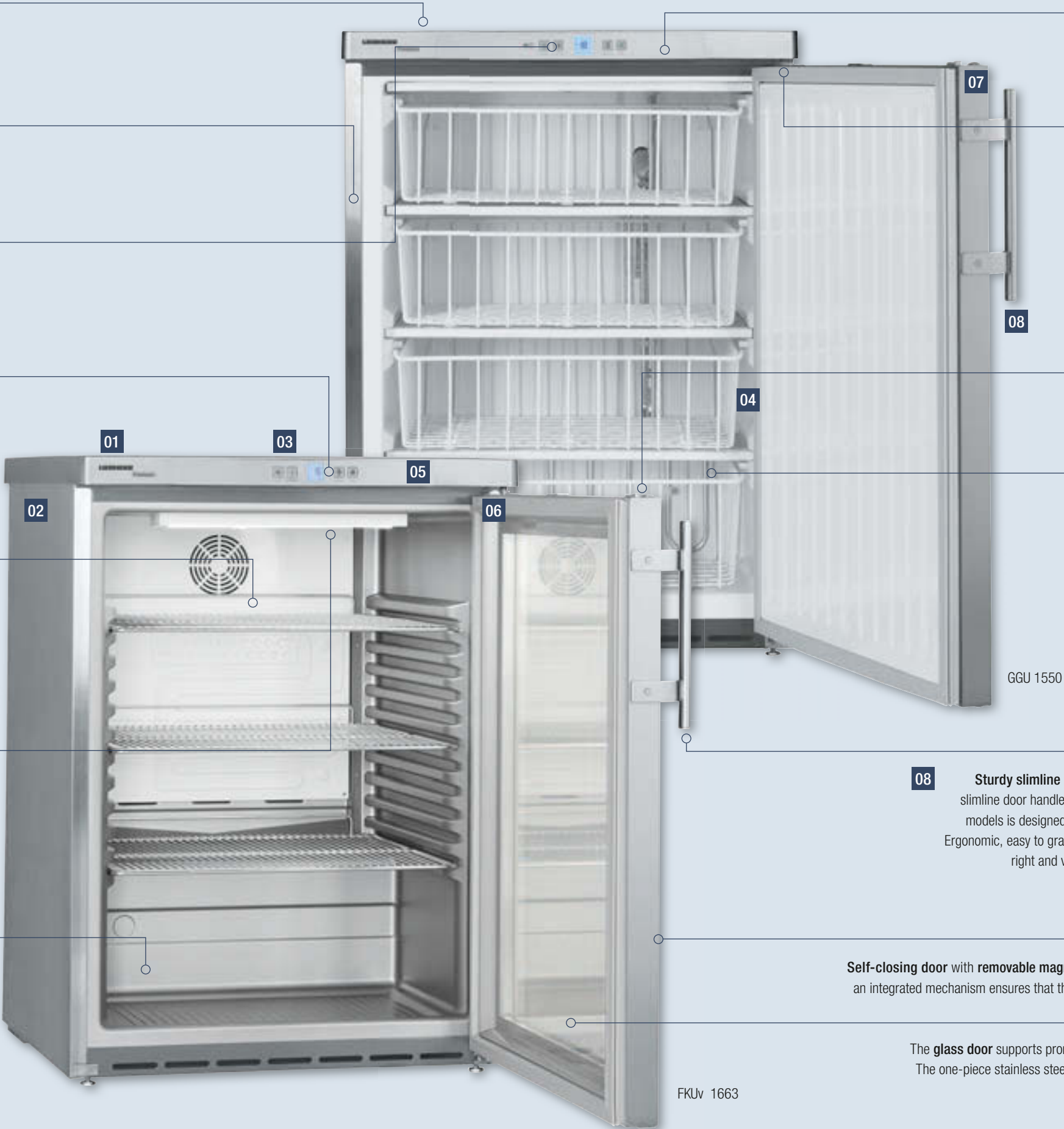
The **stable metal carrier grids** are very sturdy and have a loading capacity up to 45 kg, which ensures optimum product storage and protection. They are adjustable to allow flexible organisation and use of the interior.



Energy-efficient and economical LEDs in the glass door models ensure good illumination of the interior. The quality and freshness of the products are not affected as LED's emit very little heat.



04 The seamlessly **moulded inner liner** made of foodsafe commercial-grade polystyrene is tough, easy to clean and odourless. Since there are no hidden dirt-traps and the large radii facilitate cleaning, this enables perfect hygiene.



05 **High-quality refrigeration components,** optimised insulation and a sophisticated design ensure maximum energy efficiency and low operating costs.

06 The **door hinges** are **reversible** without any additional components and allow the appliance to be adapted to the installation site.



07 **Locks** on the refrigerator and freezer prevent unauthorised access.



The **baskets** in the GGU models can be used to organise the freezer contents and also enhance handling frozen products.

08 **Sturdy slimline door handle.** The slimline door handle in FKUv and GGU models is designed for intensive use. Ergonomic, easy to grasp from the left or right and very easy to clean.



Self-closing door with removable magnetic gasket. For convenient use and to prevent energy loss, an integrated mechanism ensures that the door closes automatically, a useful feature in busy locations.

The **glass door** supports promotional presentation and enables fast access to the products. The one-piece stainless steel door frame on the FKUv 1663 is both very robust and stylish.

Quality right down to the smallest detail

The Liebherr table-height refrigerators and freezers are extremely space-saving. For wherever floor space is limited, free space must be used very efficiently – without compromising refrigerating capacity or food freshness. The products are stored in these compact models always under optimum refrigeration conditions, and yet the appliances are very energy-efficient and economical.



Suitable for under-worktop installation – and easily integrated.
The appliances can be sited beneath a worktop. In this case, a vent grille with a cross section of 200 cm² is required in the worktop for ventilation at the rear of the appliance. Without a ventilation grille, the aperture height must be at least 3 cm greater than the appliance height. The appliances are 83 cm high to comply with the specific work heights in catering applications. The FKUv range is available with solid or glass door.



State-of-the-art controls.
These models are equipped with a high-quality controller with a large temperature display and many practical functions. Temperatures can be set exactly to the degree wanted. A visual and audible door and temperature alarm alerts the user if the temperature rises uncontrollably or the door is open. In the FKUv range, the non-contact fan cut-out switch reduces the loss of cold air when the door is opened and helps to maintain temperature consistency. The sophisticated defrost control system ensures trouble- and worry-free operation even in extreme conditions with frequent door opening. A humidity selection function allows perfect adaptation to different products.



LED interior lighting with FKUv glass door.
The one-piece door frame is very robust and visually attractive. Energy-efficient LEDs ensure harmonious and homogeneous illumination of the interior and the products – in an extremely energy-saving manner: LED lights are durable and much more energy-efficient than conventional fluorescent tubes. In addition, product quality is not affected thanks to the reduced heat emission of LED's.



Practical baskets (for GGU).
The baskets can be used to organise the freezer contents and improve stock-rotation as well as enhancing the handling of frozen products.

Energy-efficient with R 600a.
Liebherr appliances are optimised for best possible energy efficiency and low operating costs. Only the natural and environmentally friendly refrigerant R 600a is used. In conjunction with highly efficient compressors, it is highly effective – and also future-proof thanks to its low global warming potential.



Self-closing door (only in FKUv).
An integrated mechanism ensures that the appliance door closes automatically, thus preventing unnecessary loss of cold air.



Reversible door hinges.
The door hinges can easily be reversed to allow optimum adaptation of the appliances to the installation site.

Table-height refrigerators with fan-assisted cooling



Table-height refrigerators with fan-assisted cooling	FKUv 1663 Premium	LED	FKUv 1660 Premium	FKvesf 1805
Total gross /net capacity	141 /130 litre		141 /130 litre	180 /160 litre
Exterior dimensions in mm (w/d/h)	600/615/830		600/615/830	600/600/850
Interior dimensions in mm (w/d/h)	440/435/670		440/435/670	513/441 /702
Height without worktop in mm				819
Energy consumption in 365 days ¹	328 kWh		255 kWh	410 kWh
Climate rating	7		5	4
Refrigerant	R 600a		R 600a	R 600a
Sound power level	42 dB(A)		45 dB(A)	43 dB(A)
Connection rating	1.0 A/ 120 W		1.0 A/ 100 W	1.0 A/ 120 W
Frequency /voltage	50 Hz /220–240V~		50 Hz /220–240V~	50 Hz /220–240V~
Cooling system	forced-air		forced-air	forced-air
Defrost	automatic		automatic	automatic
Temperature range	+1°C to +15°C		+1°C to +15°C	+1°C to +15°C
External cabinet finish	stainless steel		stainless steel	steel / silver
Door /lid material	glass door		stainless steel	stainless steel
Internal liner material	moulded polystyrol (silver)		moulded polystyrol (silver)	commercial grade moulded polystyrol
Type of control	electronic controller		electronic controller	analogue controls
Temperature display	external digital		external digital	external digital
Fault: warning signal	visual and audible		visual and audible	
Interior light	LED lighting, with separate switch			wall-mounted light
Adjustable shelves	3		3	3
Shelf material	clear-coated wire shelves		clear-coated wire shelves	wire shelves plastic-coated
Shelf loading	45 kg		45 kg	45 kg
Handle	stainless steel slimline door handle		stainless steel slimline door handle	ergonomic slimline handle
Lock	fitted		fitted	fitted
Self-closing door	yes		yes	
Door hinges	right, reversible on site		right, reversible on site	right, reversible on site
Gross /net weight	46 /43 kg		37 /35 kg	37 /35 kg
Accessories				
Shelf, plastic-coated				7112064
Chrome wire shelf	7112321		7112321	
Stainless steel stacking kit (GGU below /top)	7777647		7777647	
Roller bars	9086607		9086607	

¹ Measured with light switched off

Table-height freezers with static cooling



Table-height freezers with static cooling	GGU 1550 Premium	GGU 1500 Premium	GGUesf 1405
Total gross /net capacity	143 /133 litre	143 /133 litre	143 /133 litre
Exterior dimensions in mm (w/d/h)	600/615/830	600/615/830	600/615/830
Interior dimensions in mm (w/d/h)	474/443/676	474/443/676	474/443/676
Energy consumption in 365 days	265 kWh	265 kWh	265 kWh
Climate rating	5	5	5
Refrigerant	R 600a	R 600a	R 600a
Sound power level	45 dB(A)	42 dB(A)	45 dB(A)
Connection rating	0.6 A/ 100 W	0.6 A/ 100 W	0.6 A/ 100 W
Frequency /voltage	50 Hz /220–240V~	50 Hz /220–240V~	50 Hz /220–240V~
Cooling system	static	static	static
Defrost	manual	manual	manual
Temperature range	-9°C to -26°C	-9°C to -26°C	-15°C to -32°C
External cabinet finish	stainless steel	steel / white	steel / silver
Door /lid material	stainless steel	steel	stainless steel
Internal liner material	commercial grade moulded polystyrol	commercial grade moulded polystyrol	commercial grade moulded polystyrol
Type of control	electronic controller	electronic controller	electronic controller
SuperFrost	quantity-controlled	quantity-controlled	time-controlled
Temperature display	external digital	external digital	external digital
Fault: warning signal	visual and audible	visual and audible	visual and audible
Drawers	0	3	0
Number of baskets	4	1	0
Shelves, freezer compartment	4	4	4
Shelf material	evaporator plates	evaporator plates	evaporator plates
Shelf loading	24 kg	24 kg	24 kg
Compartment height in mm	3 x 150, 1 x 170	3 x 150, 1 x 170	3 x 150, 1 x 170
Lock	fitted	fitted	fitted
Door hinges	right, reversible on site	right, reversible on site	right, reversible on site
Gross /net weight	42 /39 kg	42 /40 kg	38 /35 kg
Accessories			
Stainless steel stacking kit (FKUv below /top)	7777647		7777671
White stacking kit (FKUv below /top)		9876641	
Roller bars	9086607	9086607	9086607
Standard full-depth basket	9141699	9141699	9141699
Short bottom basket	9141697	9141697	9141697
Full-depth drawer	9790331	9790331	9790331

Accessories

Section: Refrigerators and freezers GN 2/1 with fan-assisted cooling and stainless steel inner liner

Infrared key or interface converter with monitoring software

Using the infrared key, the temperature profile data can be read out from the the ProfiPremiumLine interface and transferred to a PC for documentation. Temperatures and alarm status readouts can be logged centrally via the serial bus interface (RS 485) on the appliance; alarm messages can be emailed if required. An interface converter is included. Both versions are equipped with appropriate software. Suitable for the models: GKPv ..90 and GGPv ..90.



U-shaped trayslide

Additional U-shaped trayslides as available as accessories if required. Suitable for the models: GKPv 14.. and GGPv 14 ...



Stainless steel shelves

The stainless steel Gastronorm 2/1 shelves are sturdy and have a loading capacity of up to 60 kg. Suitable for the models: GKPv and GGPv.



Shelves

The plastic-coated shelves have a loading capacity of up to 60 kg. Suitable for all models: GKPv and GGPv.



NTC product temperature sensor

An NTC product temperature sensor is available as a retrofit kit for registering product temperatures. The registering temperatures can either be read by the control system or transferred to an external documentation system via the RS 485 interface. Suitable for the models: GKPv ..90 and GGPv ..90.



Optional castor set

The sturdy castors (diameter 100 mm) provide good mobility and make it easy to clean the floor underneath the appliances. Two castors are equipped with brakes. Suitable for the models: GKPv and GGPv.



Foot pedal opener

If you don't have a hand free, you can conveniently open the door with the foot pedal available as an accessory. Suitable for the models: GKPv and GGPv.



Section: Refrigerators and freezers GN 2/1 with fan-assisted cooling and polystyrol inner liner

Optional castor set

The sturdy castors (diameter 80 mm) provide good mobility and make it easy to clean the floor underneath the appliances. The castors are screwed directly onto the housing; two castors are equipped with one brake. Suitable for the models: GKv 64, GKv 57, GG 52, GGv 58 and GGv 50.



Castor base

With a height of 117 mm, the sturdy castor base makes it easier to move refrigerators from place to place whenever required. Suitable for the model: GKvesf 5445.



Roller bars

In order to ensure a easy and comfortable cleaning under the appliances, runners (diameter 25 mm) can be retrofitted. Suitable for the models: GKv 43 and GG 40.



Shelves

The tough plastic-coated wire shelves have a loading capacity of up to 45 kg (60 cm wide appliances) or 60 kg (75 cm wide appliances) respectively.



Stainless steel shelves

The stainless steel shelves are sturdy, have a loading capacity of up to 60 kg and meet the most stringent hygiene requirements. Suitable for the models: GKv 64 and GKv 57.



CNS base grid

A tough CNS base grid can be retrofitted. The base-grid ensures optimum use of the appliance base. It protects the inner liner from damage and ensures secure product storage. Suitable for the models: GKv 64 and GKv 57.



Accessories

Section: Refrigerators and freezers GN 2/1 with fan-assisted cooling and polystyrol inner liner

Adjustable legs

The adjustable legs allow plenty of clearance for easy and convenient cleaning underneath the appliance. Suitable for the models: GKv 43, GKvesf 5445 and GKvesf 4145, GG 40.



Foot pedal opener

If you don't have a hand free, you can conveniently open the door with the foot pedal available as an accessory. Suitable for the models: GKv 64, GKv 57, GGv and GG 52.



Drawers / Drawers short

The completely enclosed drawers are tough and ideal for storing small frozen food items. Suitable for the models: GG 52 and G 5216.



Baskets / Baskets short

The plastic-coated wire baskets provide a clear view of the products stored inside and ensure optimum usage of the interior. Suitable for the models: GG and G.



Section: Fridge-freezer

Shelves

The wire shelves are plastic-coated and have a loading capacity up to 45 kg. Suitable for the model: GCv 40.



Section: Table-height refrigerators and freezers

Shelves

The tough plastic-coated wire shelves have a loading capacity of up to 45 kg. Suitable for the models: FKUv.



Shelves

The white shelves are plastic-coated and have a loading capacity of up to 45 kg. Suitable for the model: FKvesf 1805.



Stacking kit

Any combination of the GGU(esf) Gastro freezers and FKUv refrigerators with dynamic cooling is possible thanks to the stacking kit. The advantage: odour and temperature separation where floor space is confined.



Roller bars

The rollers (diameter 30 mm) make it easy to move the appliance for cleaning. Suitable for the models: FKUv 16.. and GGU(esf).



Baskets / Baskets short

The plastic-coated wire baskets ensure optimum usage of the interior. Suitable for the models: GGU(esf).



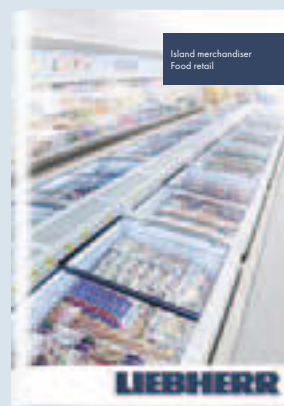
Drawers

The completely enclosed drawers are tough and ideal for storing small frozen food items. Suitable for the models: GGU(esf).

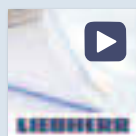


Liebherr commercial appliances can be found at specialist retailers where providing first-class service and expert advice is their top priority.

You can find an overview of all Liebherr appliances in our main catalogues. Available in stores or on home.liebherr.com.



Smart communication on all fronts



Media App

Download all catalogues and videos to your tablet quickly and easily for instant off line access.



WineGuide App

A brief overview of Bordeaux wines and their producers, plus storage information.



apps.home.liebherr.com

Find out which app is available for which operating system (Apple, Android etc.), and which device type.



The Liebherr-Hausgeräte YouTube channel provides interesting and helpful films showing you the functions of Liebherr refrigerators and freezers.



News, product launches and special promotions can be found on our Facebook page, the Liebherr blog, on Instagram and Pinterest.



socialmedia.home.liebherr.com

Learn all about our current social media channels.



Subject to alterations. Printed in Germany by raff mediagroup. 7944291-01/7/03.2016