

Display coolers  
Special  
2016/2017



# LIEBHERR

Quality, Design and Innovation

# The advantages at a glance



The **reversible door hinges** allow adaptation to the installation site.

The **automatic fan cut-out switch** minimises the loss of air when the door is open.



**Forced-air cooling system** ensures that drinks are chilled rapidly to serving temperature and that the temperature remains uniform throughout the interior.



The **moulded plastic inner liner** is odourless, very sturdy, durable and ensures perfect hygiene thanks to the generously radiused, easy-to-clean corners.

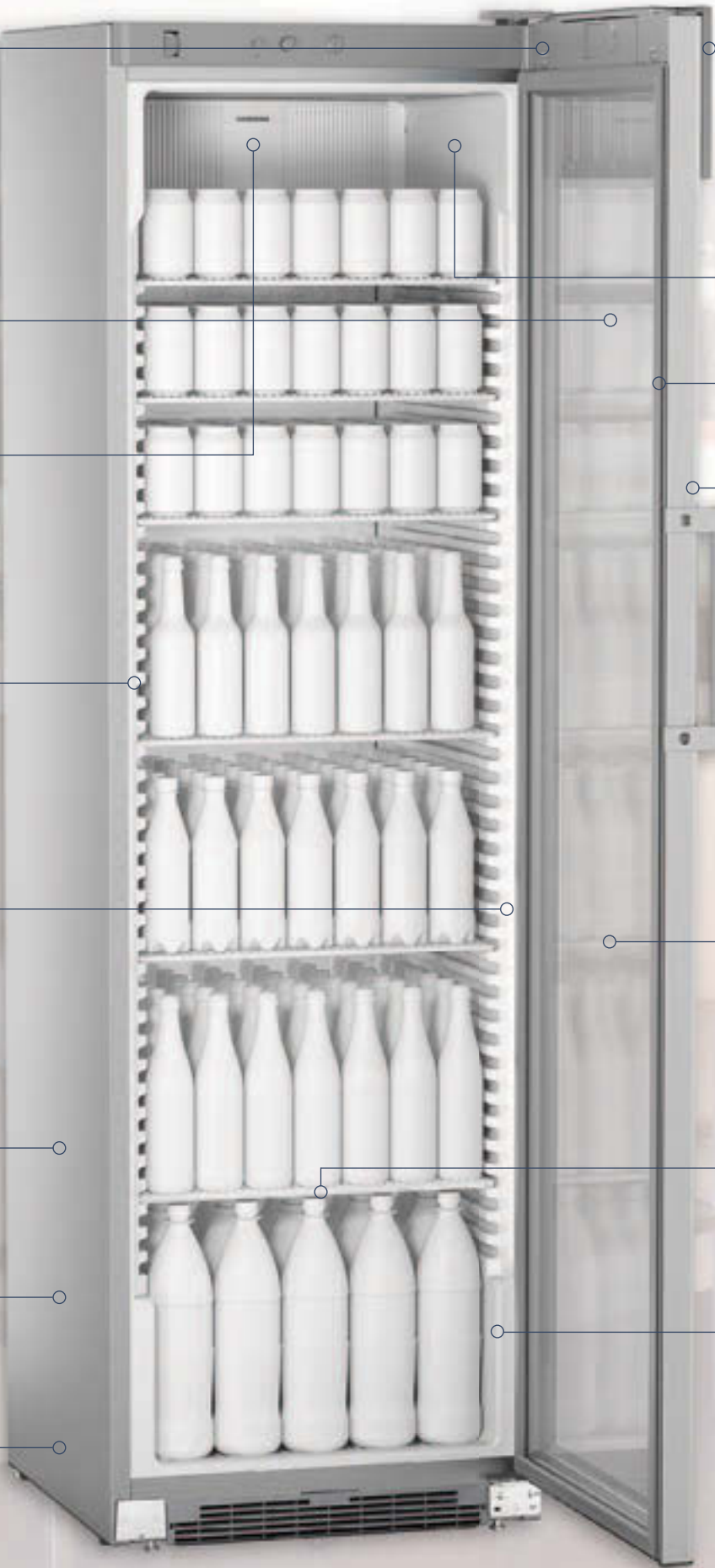


The **LED interior light with a separate switch** is energy-efficient and is designed to provide excellent product presentation without being unpleasantly bright.

The **powder-coated steel housing** features a seamless design and is extremely sturdy, impact-resistant and easy-to-clean as a result. The full height side walls can be individually designed according to customer specifications and used for branding purposes.

**RoHS and WEEE conformity** by using environmentally-friendly materials combined with optimal recyclability.

The natural and **CFC free refrigerant R 600a** is environmentally-friendly and, in conjunction with highly efficient compressors, very energy-efficient.



FKDv 4513

**LED display** is sure to attract attention to the contents. The display panel can be used for customised branding.



The **adjustable temperature range** allows individual temperature control.

The doors have **easily removable gaskets** for improved hygiene.

**Design and functionality** ingeniously combined: the HardLine design featuring side contour edges is a stylish up-market alternative for presenting your products.



The **door handle** is stylish but tough.



The **glass door** provides a perfect overview, ensures optimum energy efficiency and supports high-impact product presentation. The unique one-piece door frame combines clean looks with maximum stability.



The **plastic-coated, close-meshed wire shelves** are height-adjustable and allow variable use of the interior so that different-sized bottles, packs etc. can be accommodated. They feature an integrated retainer to ensure they are positioned firmly. This enhances security while filling with products (models FKDv 4503/.13/.23).

The **high-performance insulation** lowers energy consumption.





# Quality right down to the smallest detail

Liebherr display refrigerators provide ideal conditions for high-impact and promotional product presentation. From the LED display to the LED interior lighting (with on/off switch) to the variable interior, these appliances offer many possibilities to perfectly present

**Eye-catching illuminated display.**

Liebherr offers several solutions for drawing more attention to appliances, products and your brands. The illuminated display surface can be branded to customer specification. Four different display options are available:

- The illuminated but transparent LightGuide display (FKDv 4523) installed on the door interior. This enables clear product visibility, whilst bringing your illuminated brand logo into focus.
- The edge-lit LightGuide display on the exterior of the door (FKDv 4513), which highlights your branding and really gets it noticed. This slim LightGuide panel uniformly illuminates the entire display surface. No separate power supply is required for the lighting.
- A customised sticker attached to the interior of the door (FKDv 4503), which is vividly illuminated by the ceiling lighting.
- The striking LED-backlit display (FKDv 4203/4211/4213), which promotes a high degree of brand awareness.



the products. The display can be individually designed with attractive branding options. Height-adjustable wire shelves enable flexible adaptation to different bottle sizes and packages. The powerful cooling system ensures rapid chilling for busy locations.

**Perfect product presentation.**

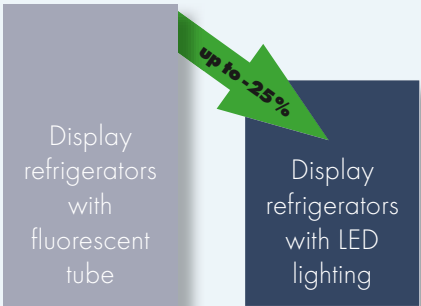
- The LED interior lighting (with on/off switch) is energy-efficient and places your products in the limelight for optimum presentation. The lighting options available are as follows:
  - The LED vertical lighting to both sides which uses lighting accents to optimally display and attract attention to the products. This stylish interior illumination can be used to underscore the exclusivity of your products (FKDv 4523).
  - The LED vertical lighting to one side which guarantees excellent product presentation (FKDv 4211/4213/4503/4513).
  - The compact LED ceiling lighting, which provides accentuated illumination of the interior from above (FKDv 4203/4503).



**Forced air cooling system.**

Fan-assisted cooling system ensures that products are chilled quickly and that the temperature is distributed evenly even throughout the interior. The automatic fan cut-out switch minimises the loss of cold air when the door is open.

Energy consumption in 24 h  
with lighting switched on



**Optimum energy efficiency, low operating costs.**

All of the display coolers use innovative LED lighting. The use of highly efficient LED lighting reduces the total energy consumption by 13 to 25 percent with the lighting switched on compared to similar models with fluorescent tubes. That lowers operating costs significantly – and the higher price of LED lighting is recovered in a very short time.

**Special optional features available on customer-specific variants**

- **Rear wall cover.**  
Fitted with the optional exterior rear-wall cover, appliances can be used in freestanding situations. Cabinets fitted with the rear-wall cover blend more harmoniously into their installation environment.
- **Electronic Monitoring System.**  
The EMS controls, which come as standard with the FKDv 4523 (and is optionally available on the other display refrigerators), offer highly convenient technology for even greater energy efficiency. For example, the system detects door opening cycles and movements in front of the appliance. The refrigeration technology responds to these by adapting the cooling capacity and, in combination with a 'light off' function, this significantly reduces energy consumption.
- **Lock for FKDv 4513.**  
The standard model FKDv 4513 does not have a lock but customer-specific variants can be fitted with locks if required.



**Maximised product visibility.**

The full-height glass door improves product visibility. Furthermore, the cabinet configuration with this door design increases available net capacity. The special glass provides good insulation and helps to enhance the energy efficiency of the appliance (FKDv 4503/4513/4523).



| Forced-air display refrigerators                   | FKDv 4523<br>PremiumPlus  | FKDv 4513<br>Premium  | FKDv 4503<br>Premium                           | FKDv 4213<br>Comfort  |
|--|---|---|--|---|
|  | LED   | LED   | LED  | LED   |
| Total gross/net capacity                           | 449/325 litre   | 449/325 litre   | 449/325 litre                                  | 411/297 litre   |
| Exterior dimensions in mm (w/d/h)                  | 600/696/2027  | 600/696/2027  | 600/696/2027                                   | 600/687/2010  |
| Interior dimensions in mm (w/d/h)                  | 456/516/1804  | 456/516/1804  | 456/516/1800                                   | 456/516/1660  |
| Energy consumption in 365 days <sup>1</sup>        | 818 kWh   | 723 kWh   | 723 kWh  | 657 kWh   |
| Climate rating                                     | 4   | 4   | 4  | 4   |
| Refrigerant  | R 600a  | R 600a  | R 600a   | R 600a  |
| Sound power level                                  | 52 dB(A)  | 52 dB(A)  | 52 dB(A)                                       | 55 dB(A)  |
| Connection rating                                  | 160 W   | 160 W   | 160 W  | 160 W   |
| Frequency/voltage                                  | 50 Hz/230V~   | 50 Hz/230V~   | 50 Hz/230V~                                    | 50 Hz/230V~   |
| Cooling system/defrost                             | forced-air/automatic  | forced-air/automatic  | forced-air/automatic                           | forced-air/automatic  |
| Temperature range                                  | +2°C to +12°C   | +2°C to +12°C   | +2°C to +12°C                                  | +2°C to +12°C   |
| External cabinet finish                            | steel/black   | steel/silver  | steel/silver                                   | steel/white   |
| Door/lid material                                  | glass door  | glass door  | glass door                                     | glass door  |
| Internal liner material                            | moulded polystyrol (silver)                                       | commercial grade moulded polystyrol                             | commercial grade moulded polystyrol            | commercial grade moulded polystyrol                             |
| Type of control                                    | electronic controller   | analogue controls   | analogue controls                              | analogue controls   |
| Temperature display                                | internal digital  | internal analogue   | internal analogue                              | external analogue   |
| Interior light                                     | LED vertical lighting to both sides, in parallel with the display | LED vertical lighting to one side, in parallel with the display | LED ceiling- and vertical lighting to one side | LED vertical lighting to one side, in parallel with the display |
| Adjustable shelves                                 | 6   | 6   | 6  | 5   |
| Shelf material                                     | wire shelves clear-coated   | wire shelves plastic-coated                                     | wire shelves plastic-coated                    | wire shelves plastic-coated                                     |
| Storage capacity 0.33 litre glass bottles          | 271   | 271   | 271  | 229   |
| Shelf loading                                      | 45 kg   | 45 kg   | 45 kg  | 45 kg   |
| Handle   | aluminium handle  | aluminium handle  | aluminium handle                               | ergonomic slimline handle                                       |
| Lock   | fitted  |   | fitted   | fitted  |
| Self-closing door/door hinges                      | yes/right, reversible on site                                     | yes/right, reversible on site                                   | yes/right, reversible on site                  | no/right, reversible on site                                    |
| Gross/net weight                                   | 95/85 kg  | 95/85 kg  | 95/84 kg                                       | 101/94 kg   |
| Also available with LED ceiling lighting           |   |   |  | FKDv 4203   |
| Also available as solid door model                 |   |   |  | FKDv 4211   |
| Accessories  |   |   |  |   |
| Shelf, plastic-coated                              |   | 7113337   | 7113337  | 7113337   |
| Shelf, clear-coated                                | 7113339   |   |  |   |
| Perforated shelf cover                             | 7746179   | 7746179   | 7746179  | 7746179   |
| Scanner rail                                       | 7435063   | 7435063   | 7435063  | 7435063   |
| Gravity feed shelf on telescopic runners           | 9007659   | 9007659   | 9007659  | 9007659   |
| Gravity feed shelf without runners                 | 7113317   | 7113317   | 7113317  | 7113317   |
| Additional lock barrels                            |   |   |  | on request  |
| Protection bracket/ Castors for protection bracket | 7790671/7790761   | 7790671/7790761   | 7790671/7790761                                | 7790669/7790761   |

<sup>1</sup> Measured with light switched off

Ambient temperatures

Climate class 3: +10°C to +25°C  
Climate class 4: +10°C to +30°C

Climate class 5: +10°C to +40°C  
Climate class 7: +10°C to +35°C

Shelves

The tough plastic-coated wire shelves have a loading capacity of up to 45 kg. Suitable for the models: FKDv.



Perforated shelf cover

The tough wire shelves in combination with the additional perforated shelf covers provide optimum stability, particularly for slim items. The perforated shelves are highly durable and optimally designed for storing drinks. Suitable for the models: FKDv.



Scanner rail

The transparent scanner rails allow customers to read prices and product information at a glance and allow convenient, unhindered access to the drinks – making the appliances quicker than ever to stock. The scanner rails attach to the front of the wire shelves and are available as accessories. Suitable for the models: FKDv.



Gravity feed shelf for bottles

On the practical gravity feed shelf, bottles are always to hand at the front. The gravity feed shelves are available both without or with telescopic runners which makes re-filling easier. Suitable for the models: FKDv.



Additional lock barrels

The appliances are equipped with locks as standard (except FKDv 4513). Several appliances can be locked with one key. Additional lock barrels with up to ten locks and keys are available for the FKDv 42.. models.

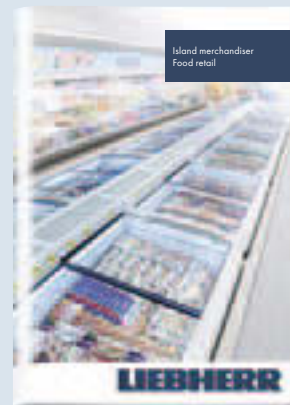
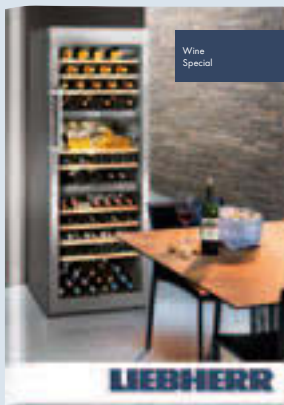


Protection bracket and castors for protection bracket

The protection bracket additionally safeguards the illuminated display. The display protector can be folded back after the appliance has been installed, making it unnecessary to dismantle the protection bracket if the appliance is often moved. To facilitate transport, two sturdy castors can be mounted directly on the protection bracket on the rear, thus allowing the appliance also to be easily moved as with a sack barrow. Suitable for the models: FKDv.

# Liebherr commercial appliances can be found at specialist retailers where providing first-class service and expert advice is their top priority.

You can find an overview of all Liebherr appliances in our main catalogues. Available in stores or on [home.liebherr.com](http://home.liebherr.com).



## Smart communication on all fronts



### Media App

Download all catalogues and videos to your tablet quickly and easily for instant offline access.



### WineGuide App

A brief overview of Bordeaux wines and their producers, plus storage information.



[apps.home.liebherr.com](http://apps.home.liebherr.com)

Find out which app is available for which operating system (Apple, Android etc.), and which device type.



The Liebherr-Hausgeräte YouTube channel provides interesting and helpful films showing you the functions of Liebherr refrigerators and freezers.



News, product launches and special promotions can be found on our Facebook page, the Liebherr blog, on Instagram and Pinterest.



[socialmedia.home.liebherr.com](http://socialmedia.home.liebherr.com)

Learn all about our current social media channels.



Subject to alterations. Printed in Germany by Eberl Print GmbH. 7944503-00/3/07.2016